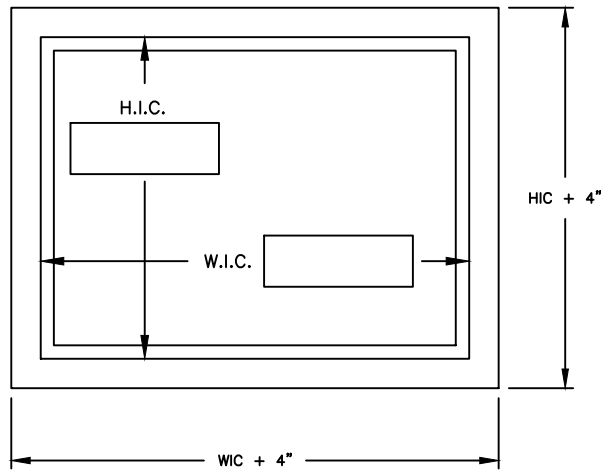


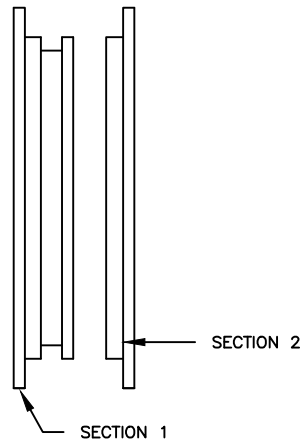
Customer and PO #

WEILAND DOORS TWO PART STAINLESS STEEL WINDOW FRAME

FRONT VIEW



SIDE VIEW



WINDOW NO.

WINDOW QUANTITY

WINDOW SIZE: W.I.C.

H.I.C.

WALL THICKNESS

WINDOW

- 1/4" POLYCARBONATE _____
- 1/4" LAMINATED GLASS _____
- 1/2" POLYCARBONATE _____
- 1/2" INSULATED AND TEMPERED _____
- OTHER (SPECIFY IN REMARKS) _____

YES

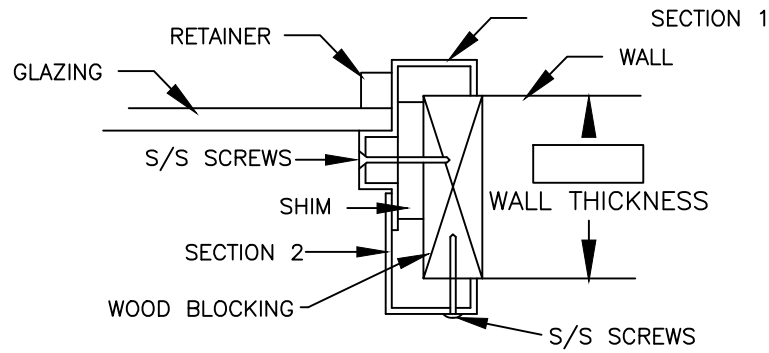
- OPTIONS _____

-- HEAT _____

TEMPERATURE DIFFERENCE

-- POLYCOATED FOR SCRATCH AND SHATTER RESISTANCE _____

CHANGES, REMARKS, ETC. _____



APPROVED BY _____ DATE _____

Weiland

2-PART S/S WINDOW FRAME

WEILAND INC.
55242 HIGHWAY 32
MADISON, NE 68748-6136
(402) 454-2106
www.weilanddoors.com